

Evolution= Permanence

Individual=urban

Interrelational= inscription

Vulnerable= monument

Precarious= Sustainable

Adaptability

non-hierarchization or 'disgrading' (without intermediary) of the relation between independent units (*single person, living cells, or capsules*) and the urbanized territory. Then the units assuming the same value regarding each other can choose their coexistence or collaboration, in the same space momentarily. They organize their interrelation thanks to the tools, the spaces and the services (*infrastructure*) provided by the public domain in the metropolis.

Infrastructure

tools, spaces et services that help the organization of the relations between single persons and the territory

Neonomadic

contemporary single citizen, spatially unfixed that habits numerous places at the same time

Collective

aggregation of independent and self-organized individual units, placed in the same environment (*copresence*) choosing their occasional and momentary collaborations

Monument

urban unit, permanent and developing, that embodies the expression of a « conscious and unifying»* contemporary culture, (Fernand Léger, *Nine points on Monumentality*)

To inhabit

(to accomodate = to work = to entertain)

Collaboration

momentary sharing of expertise, knowledge, tools, or contacts between two independent units

Copresence

spatial coexistence of independent elements that are placed in physical and / or visual contiguity

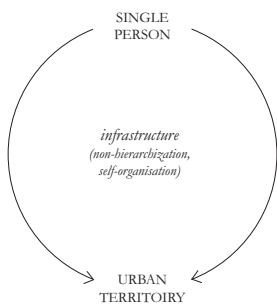
Revelation

The project site is presented as an island isolated from the city. Its history makes the comparison easy. The so-called 'zone' was an unbuildable strip all around Paris where poor and excluded person would set their home. Still today it has this image of a secluded piece of territory characterized by strong limits but without real urbanity. However, we consider that there is no 'under urbanity' or lack of urbanity but rather various urbanities. Paris hosts a specific urbanity characterized by one possible way to inhabit the territory which doesn't mean that it has to be the only one. In particular, between 'Porte des Poissonniers' and 'Porte de Clignancourt', and even all along what we call the ring strip, ideas such as proximity, convenient stores on the ground floor, urban fabric and continuity are unsuitable notions.

We think that this peripheral strip plays an extraordinary role in the Grand Paris configuration. We propose to preserve its specific character and inherent qualities rather than extending the traditional Parisian continuous urban fabric, which would alter its strength.

Our urbanism of revelation suggests the acceptance, the magnification and the development of the existing urban condition as an alternative to the introduction of a generic urban form that would solve pointed out problems. New paradigms and new visions are set in order to describe and intensify the existing situations.

From these notions, a succession of independent categorized actions is undertaken. They follow the existing logic of the strip and don't need the completeness of a system as in a traditional master plan to achieve the vision.



From the single person to the territory

In Paris, as in most of the important metropolis of Europe, 50% of the households are constituted by one individual, and we count a great number of single or non-single person who stays in the French capital for professional reasons during a more or less important amount of time and more

or less often.

This contemporary citizen creates very dynamics practices of the metropolis. As a sort of ordinary tourist, it is the inhabitant that is the most likely to move, to undertake, to consume. Unfortunately, for this extremely autonomous subject the situation of spatial non-inscription or rather of plural-inscription is a precarious position. Spaces and housing for single person tenants or for small one person offices are rare and expensive, especially in the Parisian metropolis.

We situate the contemporary urban adaptability in the highlight and simplified, direct and without intermediary relation between the subject and the whole urbanized territory. This relation cannot be organized into a hierarchy. Nor can it be rationally organized through specific scales such as the neighborhood or the arrondissement. This new paradigm is valid on the level of contemporary urban practices in general (*individuation, auto-organization*), as well as on the level of the urban structure of the project site (*discontinuity* and *non-composition*) and of the proposed spatial disposal (*aggregation*).

Collective Strip

In 2003, Tomato, a french architecture group, names 'ville périphérique' the characteristic urban development that occurred on each side of the ring. They describe it as a constellation of architectural objects with this high speed road as only physical continuity.

We don't contest this vision but we rather envision the existing urban system as a thick *strip* spread out from 'boulevard des Maréchaux' and the ancient ring 'petite ceinture' to the ring.

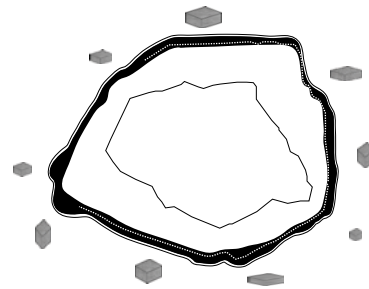
This strip has a particular urban system, specific to the Parisian metropolis. The contact with 9 peripheral arrondissement of the historical city center and the Grand Paris municipalities makes its geographic situation particularly extraordinary and crucial for the city development.

Its structure is generous and wide. Big urban forms such as football fields or universities have naturally established themselves in these large open spaces, vague but yet organized. It is indeed clearly cut into successive strips from the inside to the outside, ancient ring, 'boulevard des Maréchaux', first built stripe (called in some case the red belt when the Parisian HBM are present), the tree planted mail, the second built stripe and the ring.

Despite its form, its programs also characterize the stripe. Parisian collective facilities and collective programs in general are the most common programs to be found there. Collective housing but also hospitals, universities, schools, high schools, gymnasium, sport fields, graveyards are very present. On the contrary, offices, shopping mall, museum and sacred spaces are almost not established in the strip. And the only public spaces in the classical term are to be found

only in the form of some small parks and playgrounds.

The daily collective urban experiences that occur inside these big independent programed units give to the strip its specific urbanity. Everything else outside these collective units are infrastructural elements (ancient ring, boulevard, tramway, ring, mail) that connect the units amongst themselves and with the territory.



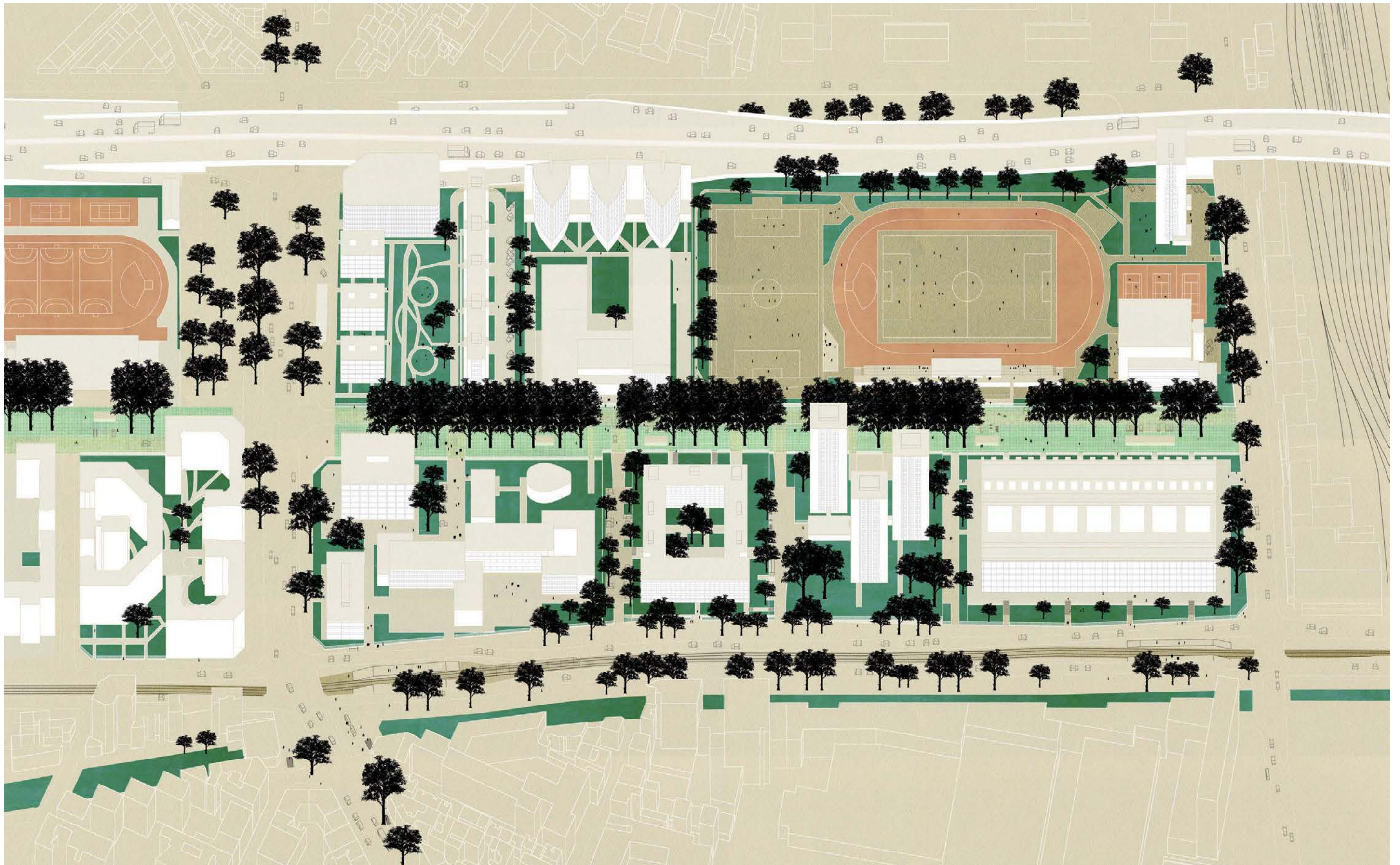
Collective Unit

The project Collective unit aims to establish the contemporary nomadic people inside the Parisian metropolis. Employees on a trip, freelancers, trainees, ect., are often in precarious situations, for both accommodation and working space. The ambition is to provide them a dedicated space, where they can accommodate, work, and develop their own project.

As churches, museums, and malls embodied the contemporary culture of their time, the new monument wants to express the contemporary culture of a new practice of the metropolitan space.

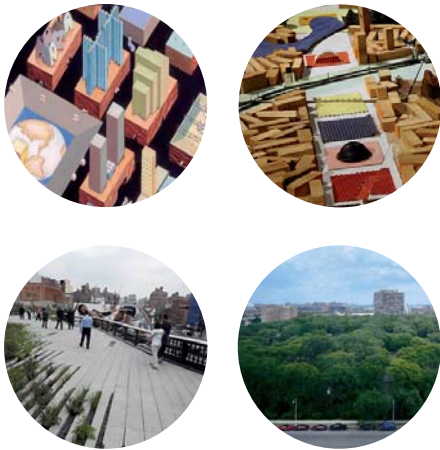
The gathering of individual inhabited units inside a metropolitan monument gives a new definition and a new shape to the ordinary concepts of collective and facilities. According to the new notions, every single individual still has an independent urban and living experience. It keeps its freedom to move around the territory without intermediate and to undertake whatever he wants. It is indeed not conceived as a self-centered community, but rather as a spatial coexistence and juxtaposition of units oriented towards the territory.

This new facility finds its natural location on the Collective strip of the Parisian metropolis. After a first Collective unit prototype located in the 18 th arrondissement, we could consider to position other collective units amongst the strip when there is enough free space. Each arrondissement would have its own contemporary monument of cohabitation. The units are in this location very connected to the territory towards the great amount of infrastructures located on the strip or around it.

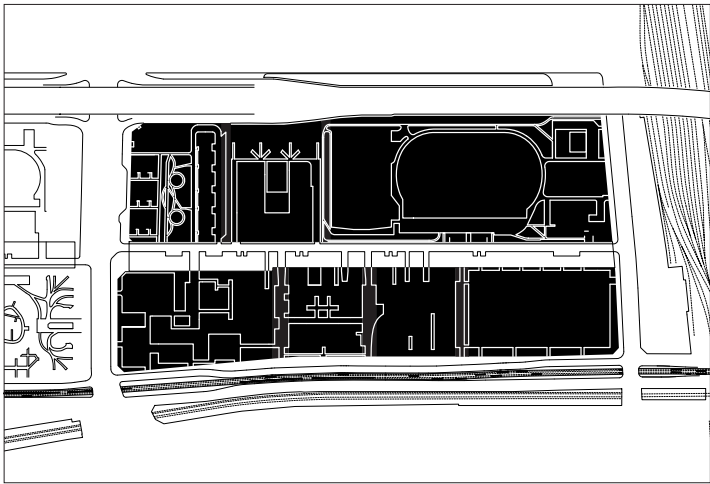




(From left to right, from top to bottom, *free forms, strips, cohabitations, 'capsule'*)

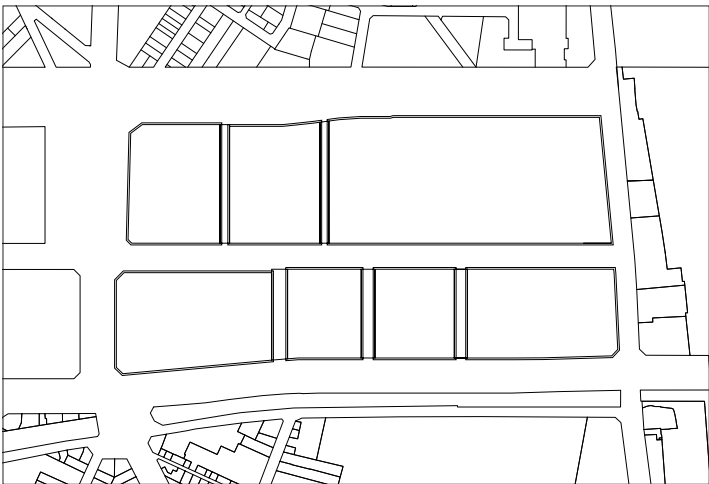


(From left to right, from top to bottom, *New York Delire* and *Melun-Sénart* from Rem Koolhaas, *High Line* from James Corner, *Lafayette Park* from Mies van der Rohe)



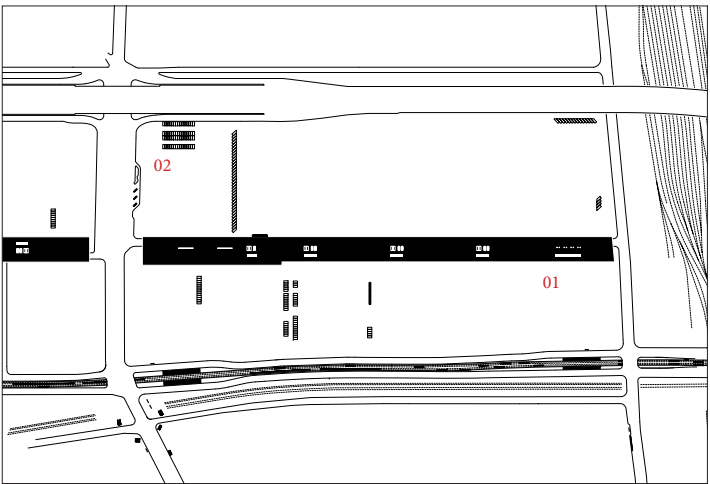
Bande

The urban structure of the site is similar to a strip, contained by the 'boulevard Ney' and the 'périphérique' and cut in two parts by the 'mail Croisset'. It's not comparable to the usual grid of historical urban fabric, but the strip can be entered and crossed in several points. In order to not de nature this urban system, its logic is clarified and enhanced, by the reinforcing the boundary and their crossing points.



Capsules

The urban strip is made of juxtaposed 'caspules'. They are independent enclosed urban units that develop their own spatial system. They are separated by in-between spaces, more transversal, the 'inter-capsules'. They mainly provide infrastructures (parking, entries) and / or green spaces.



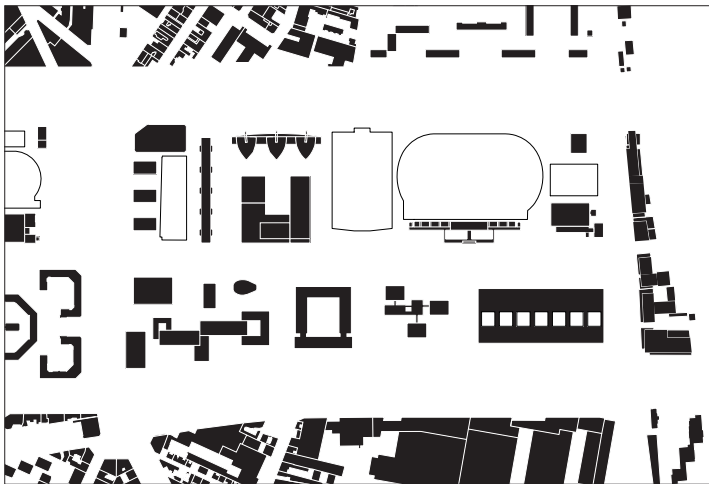
Infrastructure

The infrastructure enables the relation between the strip and the metropolitan territory. These topological connexions are already really strong on the site ('périphérique', metro, and tramway). The 'mail Croisset' provides continuity for pedestrian and bicycles, et keep a car way for the strip 'capsules' access. Its surface is renewed and punctuated by infrastructural points (mobility and services). Parking is removed and located in a hub next to the 'périphérique'. (01: 'mail' renewal, 02: new parking place).



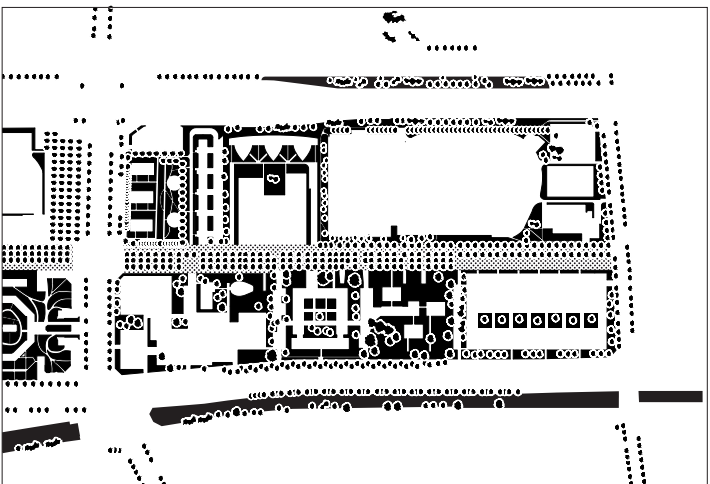
Cohabitations

Shops, offices are not implemented on the strip that keeps its collective programming and its fragmented urban form. Nevertheless the diversity and the life of the site is not neglected. The 'capsules' have each one program theme (campus, housing...) and offer a variety of practices inside their perimeter that coexist at the same time. (01: new parking place, 02: new accommodation, 03: pupils residence, 04: school restaurant, 05: collective unit)



Formes

The 'capsules' offer a building forms discontinuity. The architecture of the site is then free and is not enslaved to any 'urban façade'.



Nature

The green continuity is provided by the mail and reinforced by the renewal of its surface in a more permeable one. The landscape structure, strongly linked to its urban structure, is reinforced along the capsules and the strip.



*Chloé,
Cellule 103, Unité
Porte des Poissonniers,
designer à son compte,
locataire
pour une durée
indéterminée*

OUTILS
imprimante 3D, établi
CONNAISSANCES
informatiques, art
MOYEN DE TRANSPORT
vélo
CONTACTS
X, X, X, X, X, X, X, X, X



*Hercule,
Cellule 80, Unité
Porte des Poissonniers
, salarié comptable,
locataire la semaine*

OUTILS
-
CONNAISSANCES
informatiques, finance
MOYEN DE TRANSPORT
voiture
CONTACTS
X, X, X, X,



*Christophe,
Cellule 152, Unité
Porte des Poissonniers, artisan
plombier, à Paris
pour 3 mois*

OUTILS
-
CONNAISSANCES
plomberie, mécanique
MOYEN DE TRANSPORT
-
CONTACTS
X, X



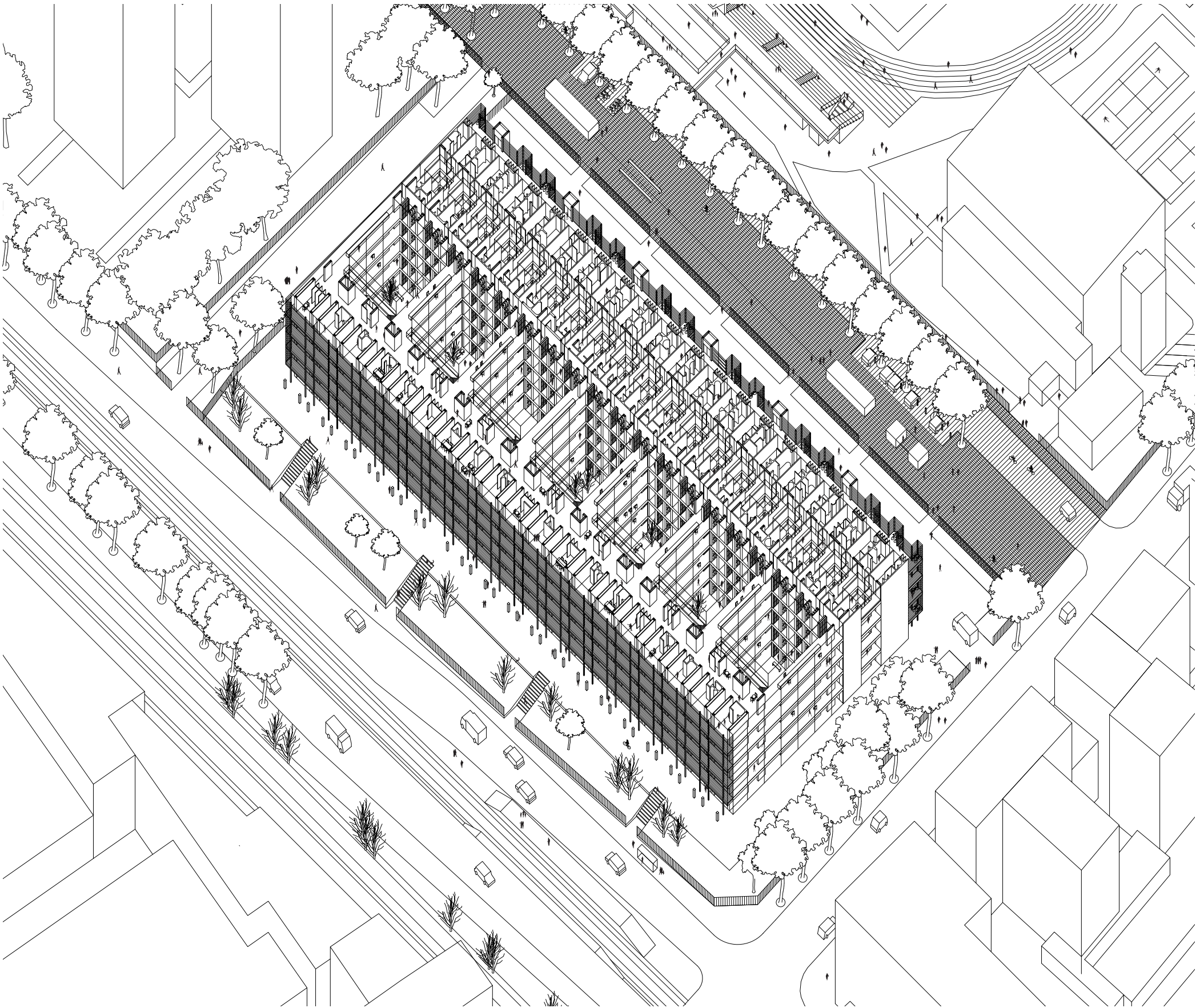
*Chloé,
Cellule 103, Unité
Porte des Poissonniers, cuisinière
freelance, pour une
durée indéterminée*

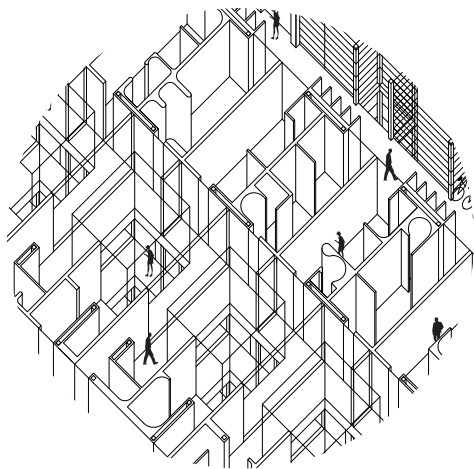
OUTILS
-
CONNAISSANCES
cuisine, art, informatique
MOYEN DE TRANSPORT
vélo
CONTACTS
X, X, X, X, X, X, X, X, X

* (Pictures from Thomas Ruff, *Portraits*)

Self-organisation platform

The collective unit Porte des Poissonniers can host until 190 tenants at the same time with very different profiles and backgrounds. Some are in business trip for more or less long period; others are enrolled in training programs or have undertaken a project on a precise amount of time. Others have a less precise agenda but happen to be in need of a short term home or working space. Check-ins are ruled from the management board located somewhere inside Paris. They are made possible online or on site by the mean of automatic distributors. Occupation of the moment as well as the inhabitants' portraits are accessible to all from the online platform. In order to promote activities developed inside the metropolis in the case of a freelance worker, a renter can indicate its professional skills on a descriptive note. Reciprocally, he can look for additional skills or advices that would help him undertaken his project. On a more general basis, each tenant can notify its knowledge, hobbies, contacts, cars, tools in order to share them with the other tenants of the unit.





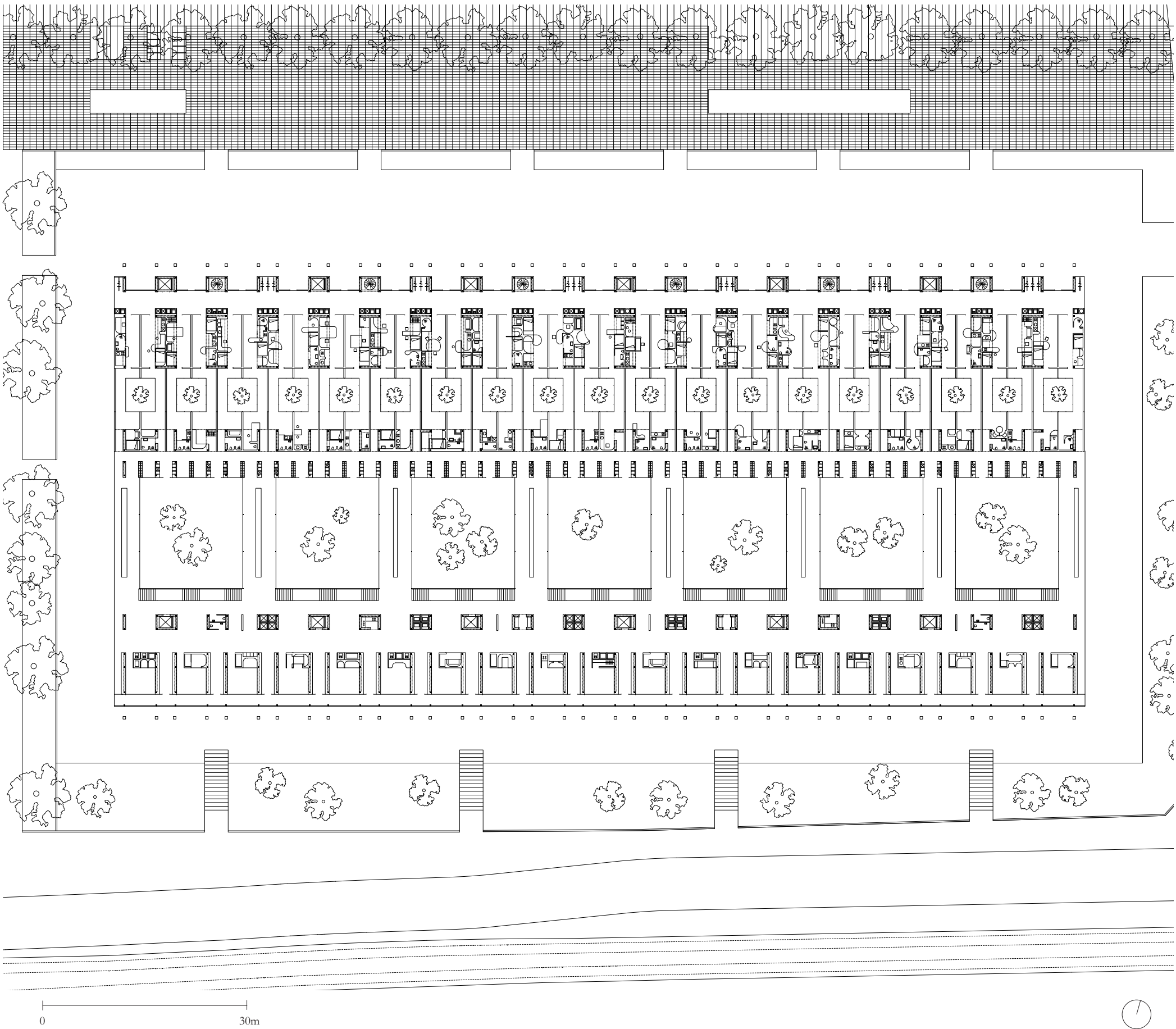
Aggregated cells

With the grouping of individual units (cells) inside one unique architectural device, we propose a vision for a new type of collective urban practices.

Following these new concepts, every single individual stays self-sufficient in its way to inhabit the city. He still has the freedom to undertake and move around the territory without any annihilating intermediate. The spatial device should not be compared to any kind of self-centered community grouping. On the opposite, it rather highlights the potential of spatial co-existence of territory oriented units. The building is conceived as an infrastructural device that deals with the relations between these units and their urban environment. In other words, it organizes the necessary and unavoidable interactions between one unit and the other ones, regardless if they are also located in the collective unit or not.

A framework of individual 3,75m wide units that develop themselves completely towards the width of the spatial device, gives shape to the spatial device. They meet with different infrastructural strips, various in shape, dimension and characteristic. Renters experience the building transversally, passing from one atmosphere to the other, from one spatial configuration to the other. On each stripe, the connections that one is able to establish with nature, territory devices, or with the other tenants are different and therefore unique.

The building goes along with self-centered urban practices. Shared spaces are only an option. The access to one cell can be made independently without going through a common area. The renter only experiences them when he wishes to.





Self-organisation infrastructure

Once the unit is booked, the renter collects an entry pass at one of the automatic distributors located outside the collective device. The pass is valid the time of the location, which can be from one day to one month. The stay can be extended without limits. And as there is not direct link between amount and duration of rent, short stays are not penalizing but worth it. The pass gives access to individual rented spaces as well as shared collective rooms.

The building is organized according to several facilities strips and fixed furniture. They give shape and limits to free spaces with endless use opportunities. Starting from this multitude of spatial configuration, the renter is offered the possibility to be alone (both in front of the territory, in front of nature, or in front of the other tenants), to be in contact with others without necessary interactions, and finally to collaborate.

These infrastructural strips are made of verticals circulations, fixed furniture and watering places as well as mechanical rooms, vending machines (of sheets, towels, dishes, chairs), entry pass automatic distributors and laundry machines.



(From left to right, from top to bottom, *Anger release machine* from Yarisal & Kublitz, furnitures from Absalon, bike renting boxes from Brompton Box.

